



RECTORSEAL

PLUMBING

SOLUTIONS solvent cement

rectorseal.com

Leading the industry in quality, warranty and support.

RS TO THE **Rescue**



A CSW Industrials Company

SOLVENT CEMENTS

Single source for distributors,

plumbers, electricians and irrigation specialists.



RectorSeal solvent cements and primers have been delivering strong, consistent pipe installation for over 50 years.

SOLVENT CEMENTS • PRIMERS • CLEANERS

RectorSeal provides an extensive range of solvent cements, offering the broadest range of sizes and formulas for welding PVC, CPVC, and ABS pipe installation.

Solvent Cement Body. Solvent cements are available in three body thicknesses - Regular, Medium, Heavy. To some degree the body of the solvent is chosen by the preference of the contractor. However, body thicknesses can affect setting times. For smaller 2"-3" piping use regular body. Heavy body cements provide a slower set that allows the contractor more time to get adequate cement around the pipe to avoid flash off.

Solvent Cement color. Colors range from clear for welding PVC to gray for electrical conduit and black for ABS application. Gold and orange color designate CPVC pipe. Blue quickly indicates irrigation type use.

Primers. RectorSeal primers properly etch the pipe surfaces to ensure a strong and consistent weld every time. Primers are offered in both purple as well as clear, satisfying applicable plumbing code.

Complete application usage chart can be found on pages 12-13.



Solvent cements, primers and cleaners are available in multiple sizes.

Action videos and full details @ rectorseal.com/solventcements



RECTORSEAL LOW-VOC SOLVENT CEMENTS

Apply all solvent cements in conjunction with RectorSeal primer

Pete™ 602L

Code	Description	Qty
55922	¼ pt.	24
55924	½ pt.	24
55926	1 pt.	12
55928	1 qt.	12
55916	1 gal. wide mouth	4



FEATURES

- LEED compliant
- NSF approved for potable water
- 3 year shelf life
- Meets ASTM D2564
- Low-VOC

WARNING: This product can expose you to Tetrahydrofuran, which is known to the State of California to cause cancer. For more information go to: www.P65Warnings.ca.gov.

○ Clear - medium body PVC solvent cement

APPLICATION • Polyvinyl chloride (PVC) solvent cement used for joining PVC pipe and socket-type fittings which meet Class 12454 as defined in ASTM specification D1784 • For up to 6" for schedule 40; 1 ¼" for schedule 80

RECOMMENDED FOR • Potable water
• Pressure pipe • Conduit • Sewers
• DWV systems • Industrial



Gene™ 404L

Code	Description	Qty
55901	¼ pt.	24
55902	½ pt.	24
55904	1 pt.	12
55906	1 qt.	12
55908	1 gal.	4



FEATURES

- Fast setting formula
- LEED compliant
- NSF approved for potable water
- 3 year shelf life
- Meets ASTM D2564
- Low-VOC

WARNING: This product can expose you to Tetrahydrofuran, which is known to the State of California to cause cancer. For more information go to: www.P65Warnings.ca.gov.

○ Clear - regular body PVC solvent cement

APPLICATION • Polyvinyl chloride (PVC) solvent cement used for joining PVC pipe and socket-type fittings which meet Class 12454 as defined in ASTM specification D1784
• Schedule 40 up to 2" pressure; up to 4" non-pressure pipe (DWV) • ABS to PVC non-pressured transition joints

RECOMMENDED FOR • Potable water
• Pressure pipe • Conduit
• Sewers • DWV systems



Gold™ 844L

Code	Description	Qty
55951	½ pt.	24
55952	1 pt.	12
55954	1 qt.	12
55955	1 gal. wide mouth	4



FEATURES

- Excellent gap filling
- LEED compliant
- NSF approved for potable water
- 3 year shelf life
- Meets ASTM D2564
- Low-VOC

WARNING: This product can expose you to Tetrahydrofuran, which is known to the State of California to cause cancer. For more information go to: www.P65Warnings.ca.gov.

○ Clear - heavy body PVC solvent cement

APPLICATION • Polyvinyl chloride (PVC) solvent cement used for joining PVC pipe and socket-type fittings which meet Class 12454 as defined in ASTM specification D1784
• For pipe up to 12" Schedule 40 and Schedule 80

RECOMMENDED FOR
• Potable water • Pressure pipe
• Conduit • Sewers
• DWV systems
• Industrial



RECTORSEAL LOW-VOC SOLVENT CEMENTS

Continued

Homer™ 828L

Code	Description	Qty
55961	1 pt.	12
55963	1 qt.	12
55964	1 gal. wide mouth	4



FEATURES

- Superior bonding strength
- LEED compliant
- NSF approved for potable water
- 3 year shelf life
- Meets ASTM D2564, CSA B137.3, CSA B181.2
- Low-VOC

WARNING: This product can expose you to Tetrahydrofuran, which is known to the State of California to cause cancer. For more information go to: www.P65Warnings.ca.gov.

Gray - heavy body PVC solvent cement

APPLICATION • Polyvinyl chloride (PVC) solvent cement used for joining PVC pipe and socket-type fittings which meet Class 12454 as defined in ASTM specification D1784 • For pipe up to 12" Schedule 40 and Schedule 80 • Remains stable from 40°F to 110°F

RECOMMENDED FOR

- Potable water • Pressure pipe
- Conduit • Sewers • DWV systems
- Industrial



Arctic™ 616L

Code	Description	Qty
55919	1 pt.	12
55948	1 qt.	12
55953	1 gal. wide mouth	4



FEATURES

- Formulated for use in cold weather
- LEED compliant
- NSF approved for potable water
- 3 year shelf life
- Meets ASTM D2564
- Low-VOC
- State of Wisconsin Approved

WARNING: This product can expose you to Tetrahydrofuran, which is known to the State of California to cause cancer. For more information go to: www.P65Warnings.ca.gov.

Clear - medium body PVC solvent cement

APPLICATION • Premium polyvinyl chloride (PVC) solvent cement used for joining PVC pipe and socket-type fittings which meet Class 12454 as defined in ASTM specification D1784 • Pipe up to 6" Schedule 40; Up to 1 1/4" Schedule 80 • Remains stable from 0°F to 120°F

RECOMMENDED FOR

- Potable water • Pressure pipe
- Conduit • Sewers
- DWV systems



Charlie™ 412L

Code	Description	Qty
55956	1/4 pt.	24
55957	1/2 pt.	24



FEATURES

- For CPVC pipe
- LEED compliant
- 2 year shelf life
- Meets ASTM F493 specs
- Low-VOC
- NSF approved for potable water

John™ 647L

Code	Description	Qty
55938	1/4 pt.	24
55940	1/2 pt.	24
55942	1 pt.	12
55944	1 qt.	12



FEATURES

- UPC (IAPMO) listed
- Meets ASTM D2235 specifications
- LEED compliant
- 2 year shelf life
- Low-VOC

Heavy Duty 811L

Code	Description	Qty
55967	1 pt.	12
55968	1 qt.	12



FEATURES

- For CPVC pipe
- LEED compliant
- 2 year shelf life
- Meets ASTM F493 specs
- Low-VOC
- NSF approved for potable water

Mike™ 425L

Code	Description	Qty
55969	1/4 pt.	24
55970	1/2 pt.	24
55973	1 pt.	12
55974	1 qt.	12

FEATURES

- Multi purpose
- LEED compliant
- 2 year shelf life
- Low-VOC

Orange - regular body CPVC solvent cement

APPLICATION • Chlorinated polyvinyl chloride (CPVC) solvent cement for joining CPVC pipe, tubing and socket-type fittings which meet Class 23467 as defined in ASTM specification D1784 • For use on CPVC pipe up to 2" Schedule 40

RECOMMENDED FOR

- Potable water • Pressure pipe
- DWV systems



Black - ABS medium body solvent cement

APPLICATION • For joining ABS plastic pipe and socket-type fittings up to 6" schedule 40 and Schedule 80 • Max VOC per SCAQMD 1168/316A or BAAQMD Method 40: 325 g/l.

RECOMMENDED FOR

- Sewer pipe
- DWV systems



Orange - heavy body CPVC solvent cement

APPLICATION • Chlorinated polyvinyl chloride (CPVC) solvent cement for joining CPVC pipe, tubing and socket-type fittings which meet Class 23467 as defined in ASTM specification D1784 • For use on CPVC pipe up to 12" Schedule 40 and Schedule 80

RECOMMENDED FOR

- Potable water • Pressure pipe
- DWV systems



WARNING: This product can expose you to Tetrahydrofuran, which is known to the State of California to cause cancer. For more information go to: www.P65Warnings.ca.gov.

Amber - medium body multi purpose solvent cement

APPLICATION • For use on PVC, CPVC and plastic pipe and socket-type fittings • Can be used on transitions joints to join PVC to CPVC and PVC • Pipe up to 6" Schedule 40

RECOMMENDED FOR

- Pressure pipe
- DWV systems



WARNING: This product can expose you to Tetrahydrofuran, which is known to the State of California to cause cancer. For more information go to: www.P65Warnings.ca.gov.

LOW-VOC SPECIALTY SOLVENT CEMENTS

Dura-Gold™ 627L

Gold - Medium body CPVC solvent cement

Code	Description	Qty
55992	½ pt.	24
55998	1 pt.	12



FEATURES

- One-step, no primer needed*
 - LEED compliant
 - 2 year shelf life
 - Meets ASTM F493 specs
 - Low-VOC
 - NSF approved for potable water
- *when code allows



APPLICATION • Chlorinated polyvinyl chloride (CPVC) solvent cement for joining FlowGuard Gold™ CPVC and fittings • For pipe up to 2" Schedule 40 and 1 ¼" Schedule 80

RECOMMENDED FOR

- One step cement • Potable water
- Pressure pipe • DWV systems

*FlowGuard Gold is a licensed trademark of The Lubrizol Corporation

WARNING: This product can expose you to Tetrahydrofuran, which is known to the State of California to cause cancer. For more information go to: www.P65Warnings.ca.gov.



Hot™ 203L

Blue - medium body PVC solvent cement

Code	Description	Qty
55988	¼ pt.	24
55989	½ pt.	24
55990	1 pt.	12
55993	1 qt.	12
55994	1 gal. wide mouth	4



FEATURES

- Very fast drying
- Excellent in cold weather
- LEED compliant
- 3 year shelf life
- Meets ASTM D2564
- Low-VOC
- NSF approved for potable water



APPLICATION • Polyvinyl chloride (PVC) solvent cement joins both rigid and flexible PVC pipe and socket-type fittings which meet Class 12454 as defined in ASTM specification D1784 • For all rigid PVC classes up to 6" Schedule 40 and 1 ¼" Schedule 80

RECOMMENDED FOR

- Potable water
- Pressure pipe • Conduit
- Sewers • DWV systems
- Irrigation Lines

WARNING: This product can expose you to Tetrahydrofuran, which is known to the State of California to cause cancer. For more information go to: www.P65Warnings.ca.gov.



PVC Electrical Conduit 633L

Clear/Gray - medium body solvent cement

Code	Description	Qty
55980	½ pt. - clear	24
55983	1 pt. - clear	12
55985	1 qt. - clear	12
55996	1 qt. - gray	12
55979	1 gal. wide mouth clear	4



FEATURES

- Conduit types I & II
- LEED compliant
- 3 year shelf life
- Meets ASTM D2564
- Low-VOC
- NSF approved for potable water



APPLICATION • Clear or gray to match conduit color • Thick formula to reduce runoff • Up to 6" Schedule 40 and Schedule 80

RECOMMENDED FOR

- PVC conduit

WARNING: This product can expose you to Tetrahydrofuran, which is known to the State of California to cause cancer. For more information go to: www.P65Warnings.ca.gov.



Gray

Clear



RECTORSEAL PRIMERS & CLEANERS

Jim™ PR-1L

Purple - Low-VOC hi-etch primer

Code	Description	Qty
55910	¼ pt.	24
55912	½ pt.	24
55914	1 pt.	12
55918	1 qt.	12
55920	1 gal.	4



FEATURES

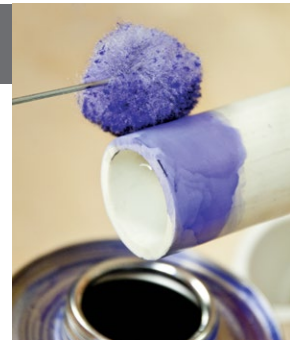
- Fast acting
- Superior bonding
- LEED compliant
- 3 year shelf life
- Meets ASTM F656
- NSF approved for potable water
- Low-VOC



APPLICATION • Prepares surfaces for superior bonding strength • For use on PVC and CPVC pipe, tubing and socket-type fittings in both Schedule 40 and Schedule 80

RECOMMENDED FOR

- Potable water • Pressure pipe • Conduit
- Sewers • DWV systems • Irrigation Lines
- Industrial



RECTORSEAL PRIMERS & CLEANERS

Clear PR-2L

○ Clear - Low-VOC hi-etch primer

Code	Description	Qty
55972	1 pt.	12
55981	1 qt.	12
55982	1 gal.	4



- FEATURES**
- Fast acting
 - Superior bonding
 - LEED compliant
 - 3 year shelf life
 - Low-VOC
 - Meets ASTM F656
 - NSF approved for potable water

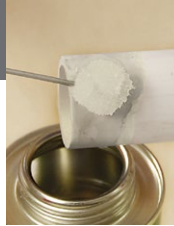
APPLICATION • Prepares surfaces for superior bonding strength • For use on PVC and CPVC pipe, tubing and socket-type fittings in both Schedule 40 and Schedule 80

RECOMMENDED FOR

- Potable water • Pressure pipe
- Conduit • Sewers • DWV systems
- Irrigation Lines • Industrial



Also available in gallon can.



Bill™ PR-3

○ Clear - Low-VOC hi-etch primer

Code	Description	Qty
55705	1 pt.	12
55707	1 qt.	12



- FEATURES**
- PVC & CPVC systems
 - Etches & penetrates
 - 3 year shelf life
 - Low-VOC
 - LEED compliant
 - Meets ASTM F656
 - NSF approved for potable water

APPLICATION • Primer for use on all PVC and CPVC pipe, tubing and socket-type fittings to etch and penetrate the surface increasing body strength • Use with all sizes and classes in both Schedule 40 and Schedule 80

RECOMMENDED FOR

- Potable water • Pressure pipe
- Conduit • Sewers • DWV systems
- Irrigation Lines • Industrial



Sam™ CL-3L

○ Clear - cleaner

Code	Description	Qty
55929	¼ pt.	24
55930	½ pt.	24
55932	1 pt.	12
55934	1 qt.	12
55936	1 gal.	4

- FEATURES**
- Fast acting
 - Safe for potable water
 - 3 year shelf life
 - Low-VOC

APPLICATION • Clear cleaner for dissolving grease and dirt to prepare bonding surfaces for solvent cementing • Use for PVC, CPVC and ABS pipe, tubing and socket-type fittings Schedule 40 and Schedule 80

RECOMMENDED FOR

- Potable water • Pressure pipe
- Conduit • Sewers • DWV systems
- Irrigation Lines • Pool, spa, flexible hose • Industrial



Also available in gallon can.

Applicator

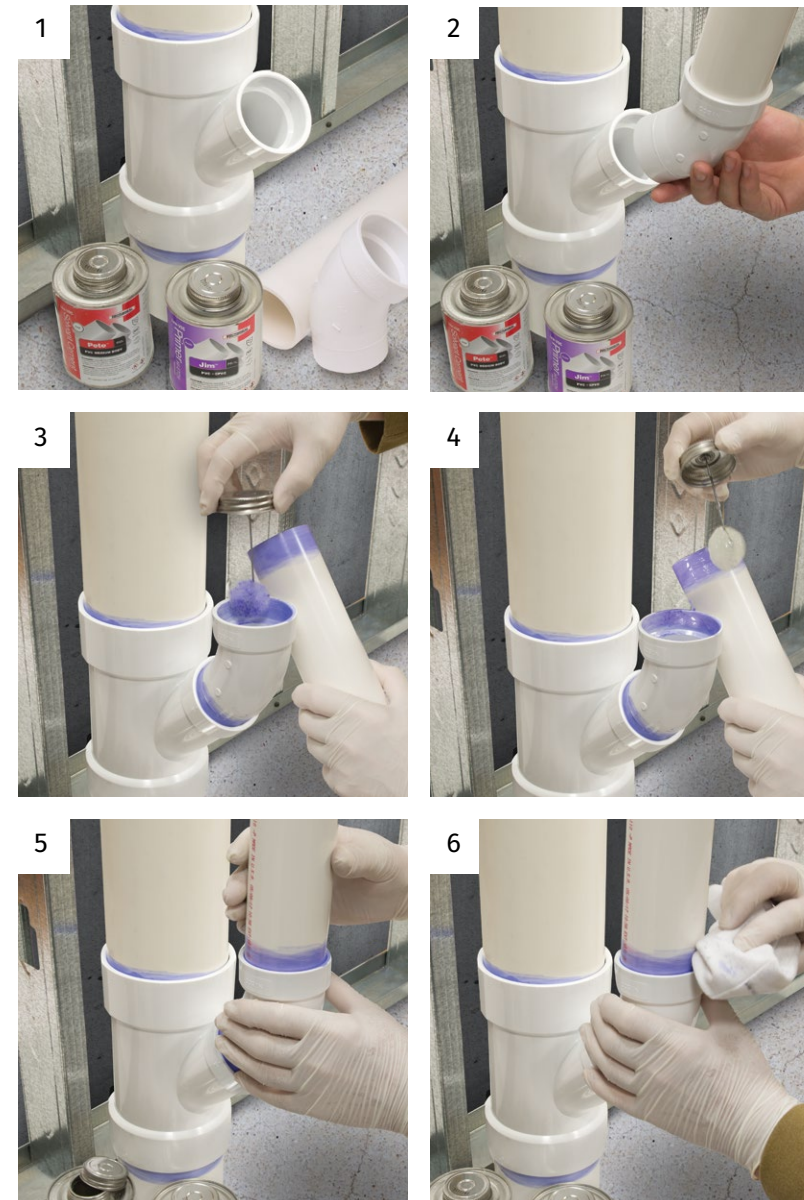
PVC solvent cement roller

Code	Description	Qty.
19073	Roller Applicator	4

Quicker application for larger diameter pipe sizes. Fits both wide mouth can and regular gallon cans.



SOLVENT CEMENT WELDING INSTRUCTIONS



1. Supplies needed to make weld: pipe fittings, primer, cleaner (if needed), solvent cement and deburring tool.
2. Before welding, dry fit the assembly, making sure the pipe and fittings are set snug and correctly positioned. Apply cleaner to both surfaces to be welded.
3. Apply primer to the outside of the male connection and to the inside of the female socket to etch the surfaces to be welded. For ABS pipe use a clear cleaner, not a primer.
4. Apply cement liberally over the primer on the male connection to the depth of the socket. Coat entire surface. Apply a thin coat of cement on the inside of the socket, being careful not to puddle cement, weakening the joint.
5. Once cement is applied, parts must be assembled quickly. If cement dries, recoat both surfaces before welding. Push pipe or fitting into socket with a quarter turn motion until you feel it bottom out. Hold the weld together for 30 seconds to prevent push out. Hold longer as needed for colder weather application.
6. Wipe off excess solvent to finish weld. Allow 15 minutes to set. Both size of pipe and temperature will affect actual cure times.

GENERAL SERVICE RECOMMENDATIONS

Product Name	PVC									ABS	CPVC			PVC/CPVC Multipurpose	PVC CPVC	PVC CPVC	PVC CPVC	PVC/CPVC ABS	
	Gene 404L	Pete 602L	Arctic 616L	Hot 203L	Electrical Conduit 633L	Electrical Conduit 633L	Gold 844L	Homer 828L		John 647L	Charlie 412L	Dura-Gold 627L	Heavy Duty 811L	Mike 425L	Jim PR-1L	Clear PR-2L	Bill PR-3	Sam CL-3L	
Body	Regular	Medium				Heavy					Medium	Regular	Medium	Heavy	Medium	Hi-Etch Primer			Cleaner
Color	Clear	Clear	Clear	Blue	Clear	Gray	Clear	Gray		Black	Orange	Gold	Orange	Light Amber	Purple	Clear	Clear	Clear	
Low-VOC	✓	✓	✓	✓	✓	✓	✓	✓		✓	✓	✓	✓	✓	✓	✓	✓	✓	
Max. Pipe Size Schedule 40	4 in	6 in	6 in	6 in	6 in	6 in	12 in	12 in		6 in	2 in	2 in	12 in	6 in	All	All	All	All	
Max. Pipe Size Schedule 80	-	1 ¼ in	1 ¼ in	1 ¼ in	6 in	6 in	12 in	12 in		6 in	-	1 ¼ in	12 in	-	All	All	All	All	
Max. Pipe Size Schedule 40 (pressure)	2 in	6 in	6 in	6 in	-	-	12 in	12 in		-	2 in	2 in	12 in	2 in	All	All	All	All	
Max. Pipe Size Schedule 80 (pressure)	-	1 ¼ in	1 ¼ in	1 ¼ in	-	-	12 in	12 in		-	-	1 ¼ in	12 in	-	All	All	All	All	
One Step Cement	-	-	-	-	-	-	-	-		-	-	✓	-	-	-	-	-	-	
Potable Water	✓	✓	✓	✓	-	-	✓	✓		-	✓	✓	✓	-	✓	✓	✓	✓	
Pressure Pipe	✓	✓	✓	✓	-	-	✓	✓		-	✓	✓	✓	✓	✓	✓	✓	✓	
Gas Lines	-	-	-	-	-	-	-	-		-	-	-	-	-	-	-	-	-	
Conduit	✓	✓	✓	✓	✓	✓	✓	✓		-	-	-	-	-	✓	✓	✓	✓	
Sewer Pipe	✓	✓	✓	✓	-	-	✓	✓		✓	-	-	-	-	✓	✓	✓	✓	
DWV Systems	✓	✓	✓	✓	-	-	✓	✓		✓	✓	✓	✓	✓	✓	✓	✓	✓	
Irrigation lines	-	-	-	✓	-	-	-	-		-	-	-	-	-	✓	✓	✓	✓	
Pool, Spa, Flexible hose	-	-	-	-	-	-	-	-		-	-	-	-	-	-	-	-	✓	
Industrial	-	✓	-	-	-	-	✓	✓		-	-	-	✓	-	✓	✓	✓	✓	
Max Service Temp	140°	140°	140°	140°	140°	140°	140°	140°		180°	180°	180°	180°	180°	180°	180°	180°	-	
Hot Water (180°)	-	-	-	-	-	-	-	-		-	✓	✓	✓	-	✓	✓	✓	✓	
Recommended Application Temp	40°-120°F	40°-120°F	0°-120°F	40°-120°F	40°-120°F	40°-120°F	40°-120°F	40°-120°F		40°-120°F	40°-120°F	40°-120°F	40°-120°F	40°-120°F	-15°-120°F	-15°-120°F	-15°-120°F	-15°-120°F	
Cure Time	Fast	Fast	Fast	Very Fast	Fast	Fast	Medium	Medium		Fast	Fast	Fast	Medium	Fast	-	-	-	-	
LEED Compliant	✓	✓	✓	✓	✓	✓	✓	✓		-	✓	✓	✓	-	✓	✓	✓	-	
Product code - Qtr. Pint (24)	55901	55922	-	55988	-	-	-	-		55938	55956	-	-	55969	55910	-	-	55929	
Product code - Half Pint (24)	55902	55924	-	55989	55980	-	55951	-		55940	55957	55992	-	55970	55912	-	-	55930	
Product code - Pint (12)	55904	55926	55919	55990	55983	-	55952	55961		55942	-	55998	55967	55973	55914	55972	55705	55932	
Product code - Quart (12)	55906	55928	55948	55993	55985	55996	55954	55963		55944	-	-	55968	55974	55918	55981	55707	55934	
Product code - Gallon (4)	55908	55916	55953	55994	55979	-	55955	55964		-	-	-	-	-	55920	55982	-	55936	
Shelf Life	3 year	3 year	3 year	3 year	3 year	3 year	3 year	3 year		2 year	2 year	2 year	2 year	2 year	3 year	3 year	3 year	3 year	



A CSW Industrials Company

PLUMBING DIVISION


RectorSeal provides industry-leading digital and print support materials for its extensive chemical and mechanical solutions that include:

- Technical Product Information
- Marketing Support Materials
- Engaging Product Demonstration Videos
- Informative SDS and Product Data Sheets
- On-demand and Live Training and Webinars
- Learning Management System (LMS) support via RectorSeal Academy
- Informative Distributor and Sales Representative Tools
- Industry-related Tradeshow and Events Information


For complete details, visit www.rectorseal.com


For the latest product enhancements, news, and updated information, please follow RectorSeal's social media channels.

 facebook.com/rectorseal

 linkedin.com/company/rectorseal

 twitter.com/rectorseal

 instagram/rectorseal

 youtube.com/rectorsealcorp

All information is believed to be current at the time of printing, but our policy is one of continuous development. RectorSeal makes no warranties, express or implied, as to its accuracy. RectorSeal reserves the right to discontinue, update or change the information at any time without notice or without incurring obligations.

RectorSeal® • 2601 Spenwick Drive, Houston, TX 77055, USA • 713-263-8001 • rectorseal.com

RectorSeal®, the logos and other trademarks are property of RectorSeal, LLC, its affiliates or its licensors and are protected by copyright, trademark and other intellectual property laws, and may not be used without permission. RectorSeal reserves the right to change specifications without prior notice. ©2023 RectorSeal. All rights reserved. R50011 06/23